



EVO-1083 Rear Bolt-On D-Ring Mounts

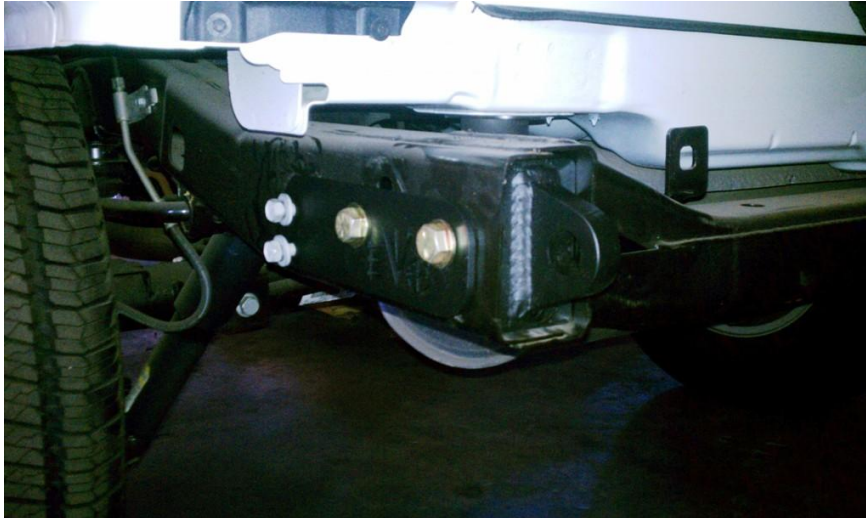
Notes: Use at your own risk! Check your local laws as to whether this product and/or operating a vehicle without a rear bumper is legal. For off road use only.

	QTY	PART#	DESCRIPTION
<input type="checkbox"/>	2	EVO-11052B	REAR FRAME SHACKLEMOUNTS
<input type="checkbox"/>	1	EVO-11053B	OUTER FRAME MOUNT PASS
<input type="checkbox"/>	1	EVO-11054B	OUTER FRAME MOUNT DRIVER
<input type="checkbox"/>	1	EVO-770043	BOLT ON D-RING HARDWARE PACK
<input type="checkbox"/>	2	EVO-12031	CZ NUT TAB

ALWAYS STAY CLEAR OF ALL TOW POINTS (EVO-1083 or similar) AND OTHER ITEMS WHEN PULLING/TOWING



1. Remove the 2 bolts on each side of the rear frame attaching factory rear bumper to frame. Both passenger and driver sides. Retain bolts, they will be reused.
2. Remove the two bolts, one on driver and one on passenger side threaded into back of bumper just under rear door. These can be accessed from underneath the vehicle just on top of rear most crossmember on frame.
3. Remove bumper
4. Some JKs come with hooks and tow points on either the driver or passenger side rear frame rail. These will need to be removed.
5. With the rear frame rails now completely exposed, insert the EVO rear D-Ring mounts into the rectangle opening on the rear frame on the driver side. May need to be tapped into frame.
6. Supplied are two side mount plates (ones with "EVO" cut into them), one for the driver and one for the passenger side. Only difference is the logo will be opposite. With the driver side plate, logo legible, loosely install the two bolts through the EVO side mount plate that originally held on the bumper onto the side of the frame into their original holes.
7. Install the 9/16" bolts with a small washer on the head side through the side mount plate then the frame and EVO D-Ring mounts.
8. ****The forward bolt uses the larger washer on the inside of the frame and then a nut****
9. The rear bolt uses the smaller washer on the inside of the frame and the supplied nut plate. This nut plate will need to be fit into the gap on the crossmember on the rear of the vehicle to assess the bolt. This can be done by cutting/grinding a small amount of the metal until the nut can be fished in or with a few taps of a hammer to open the hole slightly.
10. Tighten factory bolts to 35 ft/lbs. Tighten 9/16 bolts to 120 ft/lbs
11. Repeat the previous 6 steps on passenger side.



Optional: For a flush mount with the frame, use a Sawzall or similar tool and cut rear frame ends flush with rear crossmember.