

THE INFORMATION CONTAINED IN THIS DRAWING IS THE SOLE PROPERTY OF SYNERGY MFG. ANY REPRODUCTION IN PART OR WHOLE WITHOUT THE WRITTEN PERMISSION OF SYNERGY MFG IS PROHIBITED.

Revisions			
Rev.	Description	Date	Approved
A	Initial Release Per ECO 18-029	4/19/18	A.S.

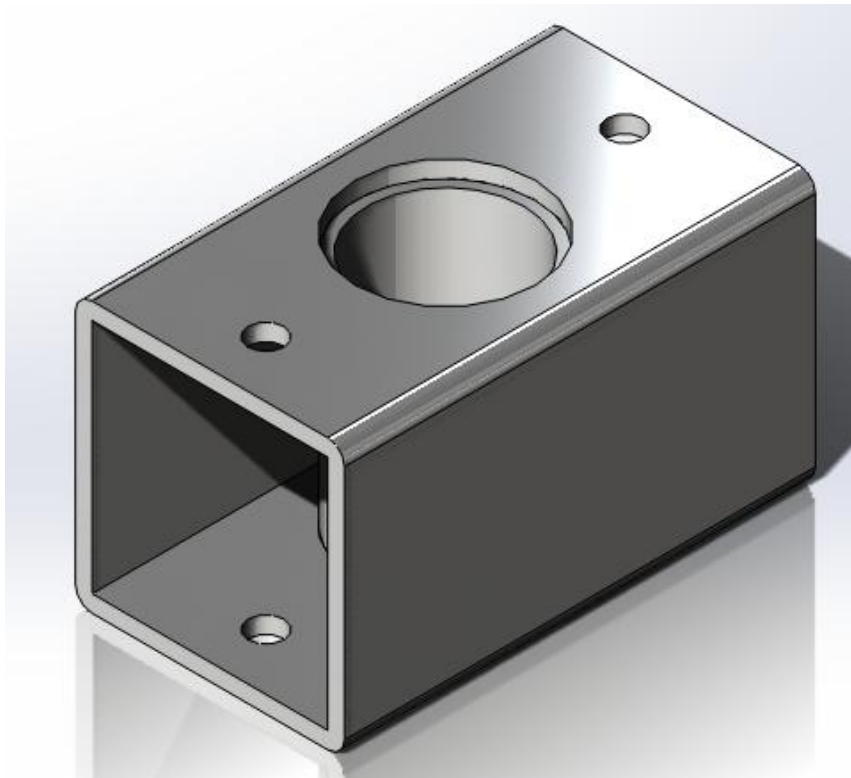


DODGE RAM REAR 3 INCH BUMP STOP SPACERS

Installation Instructions

Applications:

94-PRESENT DODGE RAM 2500/3500 4X4



TITLE:
**DODGE REAR BUMP STOP
 INSTALLATION INSTRUCTIONS**

SIZE	DWG NO:	REV
A	8520-INST	A
	SCALE: N/A	PAGE 1 OF 4



Thank you for purchasing the best aftermarket products available for your vehicle. We strongly feel that the parts you are about to install should meet or exceed your expectations for performance. Proper assembly is critical to the performance of these components and the vehicle as a whole. Please take the time to carefully read these instructions and familiarize yourself with the installation procedure before working on your vehicle. If you have any questions PLEASE contact Synergy Manufacturing BEFORE beginning installation. Thanks again for supporting Synergy – enjoy the performance benefits of the best aftermarket products available for your vehicle!

Synergy Manufacturing
Phone: (805) 242-0397
Email: support@synergymfg.com

Modifying or otherwise altering vehicle components may cause the vehicle to handle differently than originally designed. It is the driver's responsibility to familiarize themselves with the performance and handling characteristics of the modified vehicle. Vehicles with larger diameter than stock tires must be driven carefully and cannot be expected to perform as stock or meet OEM performance with regard to handling, braking or crash performance. Ensure all replacement components are compatible with vehicle capacities so as not to overload components, especially tires. It is up to the individual to ensure that the vehicle and all components are compatible with the intended vehicle use, including load ratings, road conditions, and driver abilities. Thorough and frequent vehicle inspections are recommended to ensure a safe and reliable state of readiness, especially after off-highway use.



PARTS LIST

8520-10 DODGE RAM REAR BUMP STOP SPACERS		
QTY	Part Number	Description
2	852010-PC	DODGE 94-PRESENT REAR BUMP STOP SPACER 3"
8	N/A	3/8 FLAT WASHER
4	N/A	3/8-16 X 1 UNC GRADE 8 HEX HEAD BOLT
4	N/A	3/8-16 UNC STOVER NUT

GENERAL NOTES

- These instructions are also available on our website: www.synergymfg.com. Check the website before you begin for any updated instructions and additional photos for your reference.
- We recommend running 3" bump stop spacers with a 6" lift (3" or more of rear lift).
- Many supplemental air bag kits mount on the bump stops. These spacers can be used with those kits in many cases, but we cannot guarantee fitment.

TOOLS NEEDED

- Basic hand tools
- Wrench and sockets – 16mm, 9/16"

ESTIMATED INSTALLATION TIME

.5 - 1 Hour

INSTALLATION

1. Although it is not necessary for installation, jacking up the rear of the vehicle and drooping out the suspension may simplify the install process.
2. Locate and remove the rear factory bump stops. They are attached to the frame above the rear axle with two 16mm head bolts per side.
3. Using the hardware provided, install the factory bump stops to the 8520 Dodge Rear Bump Stop Spacers. Torque the 3/8 hardware to 40lb-ft (55Nm). **See Figure 1.**



Figure 1. Factory bump stop attached to 8520 Dodge Rear Bump Stop Spacer

4. Using the factory hardware, attach the bump stop assemblies to the factory mounts. **See Figure 2.**



Figure 2. 8520 Dodge Rear Bump Stop Spacers installed on factory mounts.

**Installation is Complete
Be Sure to Check Hardware Periodically!**