



FALCON SHOCKS

TOYOTA HILUX 15+

SHOCK LEVELING SYSTEM

QUICK START GUIDE

Every aspect of vehicle dynamics must be considered in developing a properly engineered suspension system to ensure predictable handling and a smooth ride. This includes correct suspension geometry as well as properly matching the shock's compression and rebound to the spring rate.

Falcon Shocks went back to the drawing board to engineer brand-new shock absorber systems that are properly matched to the factory spring rate resulting in a sportier ride with better control and handling without sacrificing ride quality. Our in-house engineering experts have invested hundreds of hours in dyno verified – as well as real world on and off-road driving – shock tuning to deliver optimal results. Results that can be felt in a “seat-of-the-pants” drive.

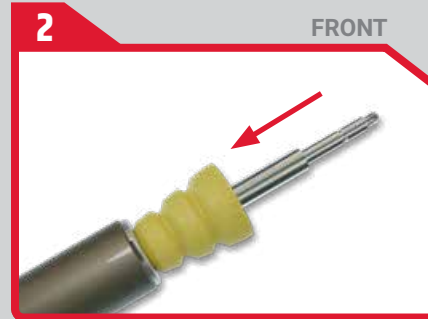
All Falcon Shocks are designed, engineered, and built with state-of-the-art methods including CAD designs, finite element analysis (FEA), in-house lab simulation, and real-world street and trail testing.

For more information regarding Falcon Shocks installation view the Video Installation Guide found on: <https://www.falconshocks.com/videos>



INSTALL PREP:

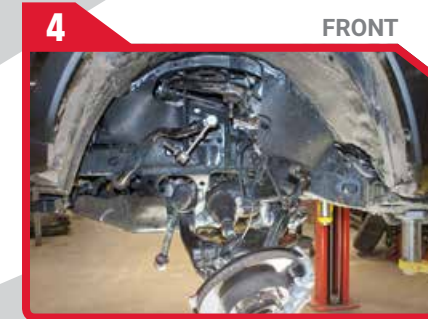
- Move the snap ring (pre-installed on “Level” setting) to the desired ride height.
- Install the coil carrier and spring retainer onto the front shocks.



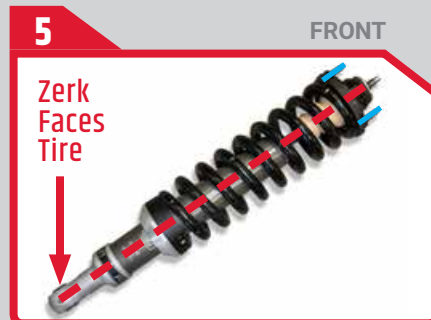
- Orient and install the bump stop onto the shock shaft as shown.



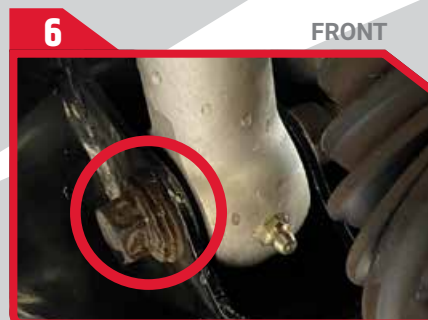
- Before removing the strut assemblies mark the coil spring, spring isolator and strut tower to ensure the spring is reinstalled correctly.



- Remove the front strut assemblies (refer to the factory service manual).
- Have a qualified mechanic separate the coil spring from the factory strut and install the spring onto the Falcon Shocks.



- Note the strut top cap in relation to the lower eyelet and grease zerk.
- Install the shaft nut and tighten until it bottoms out. Torque to 40 ft.lbs. (54 Nm).
- **DO NOT** use an impact gun to torque the shaft nut.



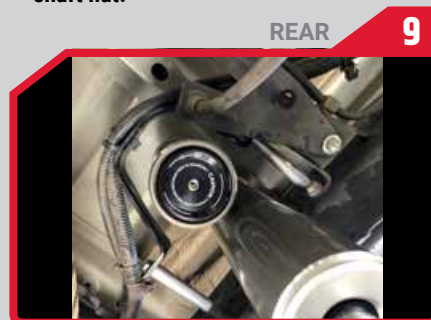
- Install the Falcon Strut Assemblies using the factory hardware.
- Torque to 70 ft. lbs. (95 Nm).
- The grease zerk faces out to help with future maintainance.



- Reassemble the IFS components.
- Torque all the IFS components' hardware to the factory torque specifications.



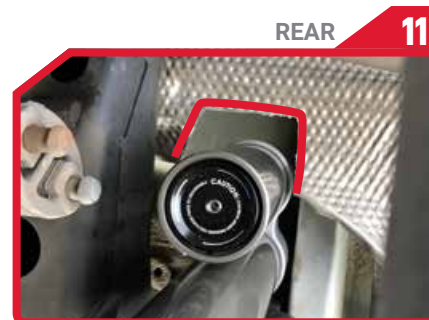
- Install the roost guards using the provided thread lock and hardware.
- Torque bolt to 30 in. lbs. (3.4 Nm.)



- On the left side, install the provided spacers to give clearance for the wire harness around the shock.
- Install the upper end of the left side rear Falcon Shock. Torque to 77 ft. lbs. (105 Nm).



- Remove the bolt closest to the brake line.
- Loosen the remaining bolt.
- Swing the bracket out of the way enough to allow the shock to clear.
- Tighten the loose bolt.



- On the right side, trim the heat shield as shown.
- Install the upper end of the right side rear Falcon Shock. Torque to 77 ft. lbs. (105 Nm).



- Orient the lower eyelets so the roost guards face away from the axle.
- Install the lower eyelet and torque to 72 ft. lbs. (98 Nm).

NOTES



RED LINE FULL SYNTHETIC OIL HAS A HIGH VISCOSITY INDEX OF 540 FOR SUPERIOR ALL-WEATHER PERFORMANCE.



HAND WASH WITH SOAP AND WATER FOR CLEANING. DO NOT CLEAN WITH ACIDS.



3 YEAR WARRANTY TO BE FREE OF DEFECTS AND WORKMANSHIP. REPAIR OR REPLACE AT NO COST.